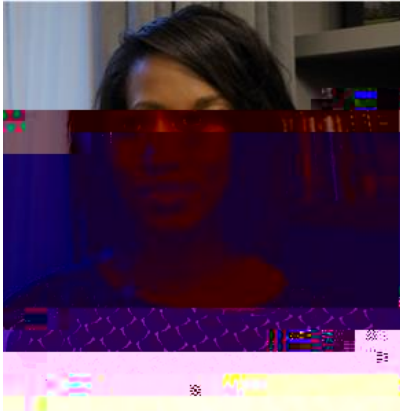


COVID-19 & BAME communities

Discrimination and Workers Rights: An academic discussion on anti-racism and social care.



Our Chair



Sophie Chester-Glyn,
Director at Coproduce Care CIC
RM at Manor Community

Our Panellists



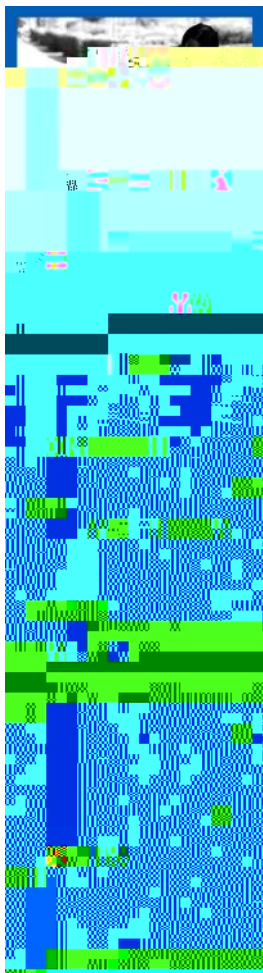
David Gillborn,
Professor of Critical Race
Studies,
Director of Research in the
School of Education
Deputy Director of the Centre for
Research in Race and Education
(CRRE) Uni. of Birmingham

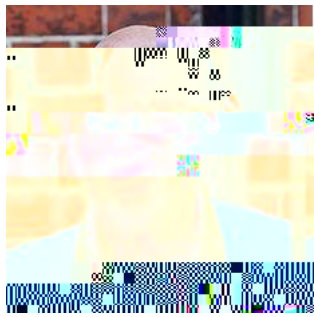
Editor-in-chief of the journal Race
Ethnicity and Education,



Hári Sewell,
Director of HS Consultancy.

Specialist Guest Lecturer
(Collaborative Practice, AMHP
Course), University of Bradford.
Hon Senior Research Fellow,
Associate (Citizen and
Community) University of Central
Lancashire

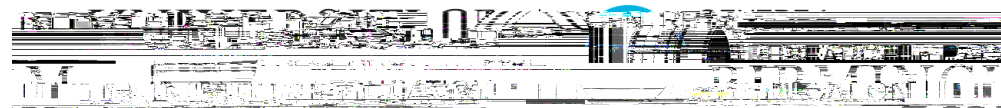


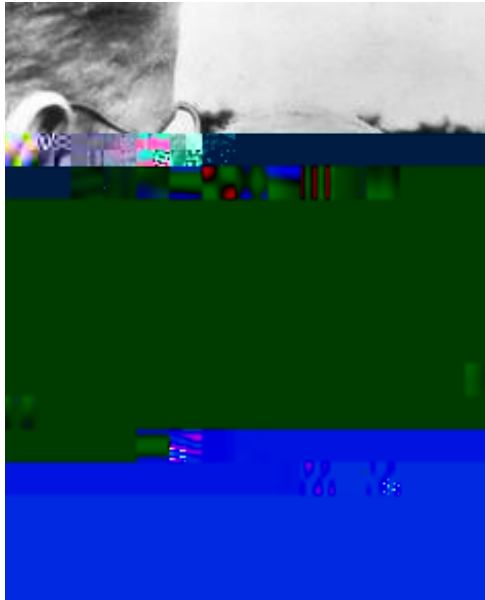
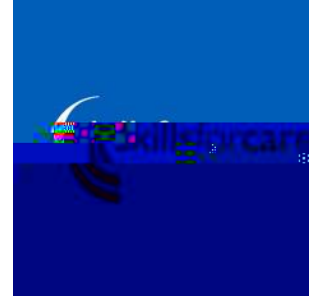
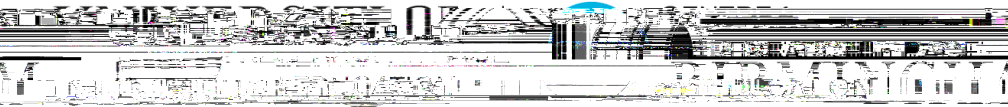


David Gillborn

Anti-Black racism

Change & Antiracism

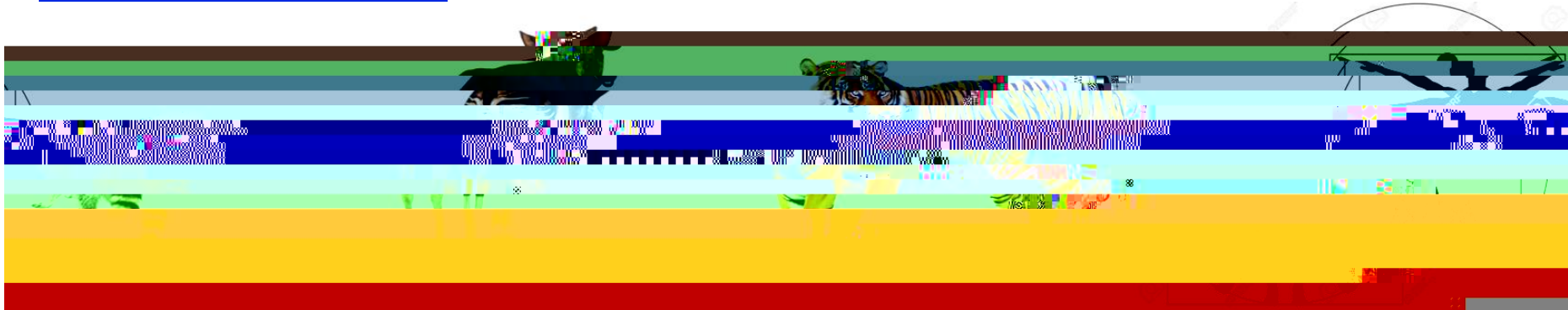


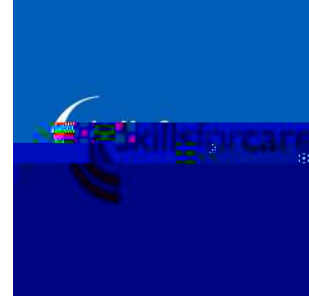
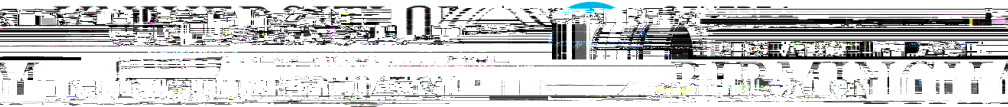


In 2005, only two years after the sequencing of the human genome, the editors of Nature Biotechnology put it like this:

grouping raccoons, tigers, and okapis on the basis that

Perhaps, then, the better question is: Why do we continue to





Traditional view of racism

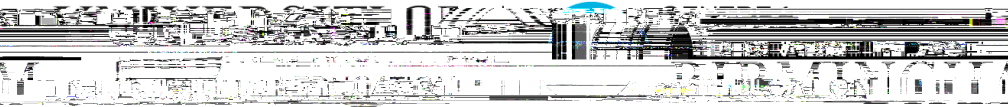


An exceptional occurrence driven by crude race hatred.

Critical understanding of racism

Complex, subtle and extensive.
Racist acts can be well-intentioned.





Racisms

Different groups are subject to different racist stereotypes

Anti-Black racism is especially deep rooted

characterized by

- o low expectations,
- o fear of threat,
- o over-surveillance,
- o more severe and more frequent disciplinary action



Critical understanding of racism

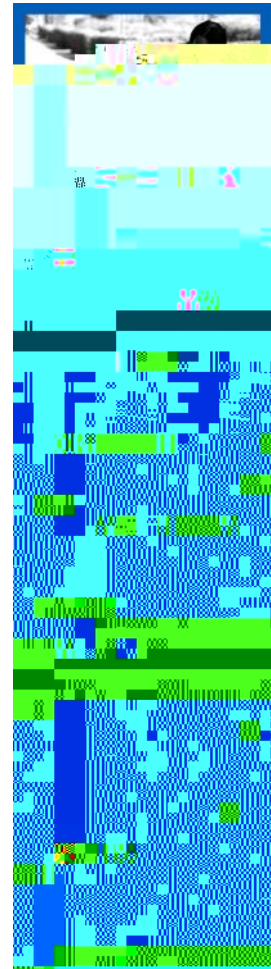
Racism is complex,
subtle,
extensive.

Business -as-usual
is the problem

anti-racist measures are essential



Hari Sewell



Panellist Question Time

Joint discussion / Q&A

